

Battery

Overview

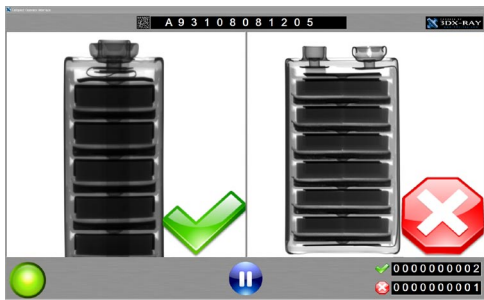


The DEX HRS

The DEX HRS battery inspection system is an advanced production line or laboratory x-ray inspection tool that is suitable for all battery and fuel cell types.

The system can accurately measure internal linear distances, alignments, the quality of internal electrical contacts, short circuits and miss-aligned components. With a rotational and translation stage incorporated, full 360 inspection of the component can take place in seconds. The data it produces can be linked into a QC, SPC or SCADA system.

Standard System Configuration



System Package

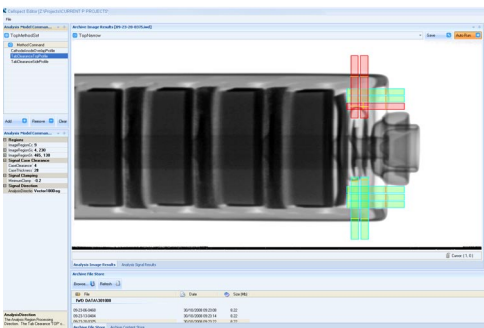
- Windows XP – including recovery disk
- Image capture / display / save
- Motion control
- Auto-calibration
- Pre-set capture modes
- System status notification

System Maintenance Package

- System set-up tools
- Diagnostics and condition monitoring

The following packages can be added as required:

Software Packages



Data Analysis Package

- Create & store analysis parameters
- Export analysis parameters & data sets
- 'Region of Interest' analysis

Automation Package

- Create & store workflows
- Create, store and export data capture parameters and sequences
- Create, capture & analysis sequences (requires data analysis module)
- Process results & data save (auto-export to SQL database)

Data Viewer

- Monitor image datasets and analysis in real time
- Review image datasets and analysis in SQL database
- Remote operation over network

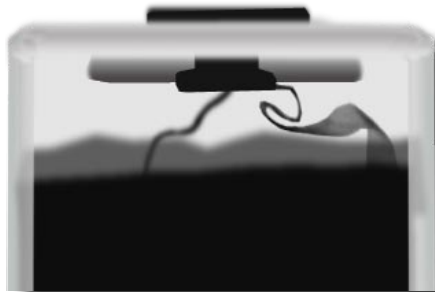
Data Storage

- SQL database compatibility



Battery

Hardware Specification



X-ray Source

Type	Typically 150Kv, 1.2mA
Power	180 to 640 Watt
Switch-on Time	200 msec

X-ray Detectors

Type	Area detector
Resolution	50µm
Dynamic Range	Dynamic Range - 4096 (12 bit)

Sample Stage

Stage Translation	Vertical and rotation
-------------------	-----------------------

System Control

PC	19" Rack mounted
PC Operating System	Windows XP
Network Interface	Ethernet IP
Operator Interface	LCD screen / keyboard

Data Storage

Hardware	Factory network or external PC
Database	SQL

System

Power	110 / 220v AC, 50/60 Hz
Weight	From 500Kg (options dependent)
Dimensions	1330 x 1320 x 820mm depending on configuration

Environmental

Operating Temp	10 to 30°C
Survival Temp	0°C to +40°C
Rel. Humidity	5 to 90% non-condensing
WEEE Regulations	Reg. No. WEE/AH0116XU

Safety / Standards

IRR99 Radiation protection rules

In the interests of product development, 3DX-RAY reserves the right to change specifications without notice.

tel: +44 (0) 1664 503600

fax: +44 (0) 1664 503601

email info@3dx-ray.com

web www.3dx-ray.com

3DX-RAY

3DX-RAY LTD

Pera Innovation Park Nottingham Road
Melton Mowbray Leicestershire LE13 OPB

November 2008

3dx_battery_ds_uk_d_1108



Design Detect Deliver
X-Ray Solutions for Security and Industry